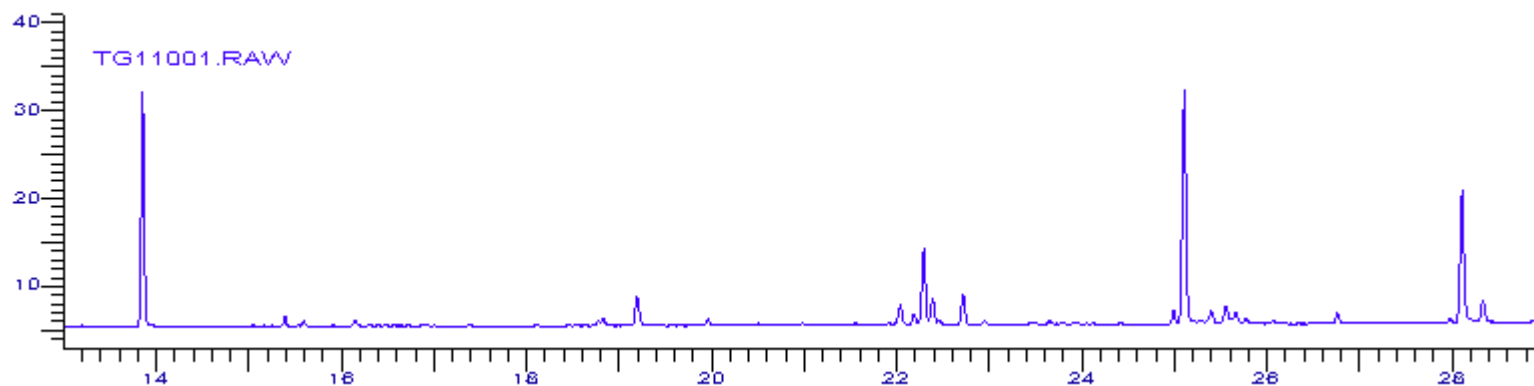
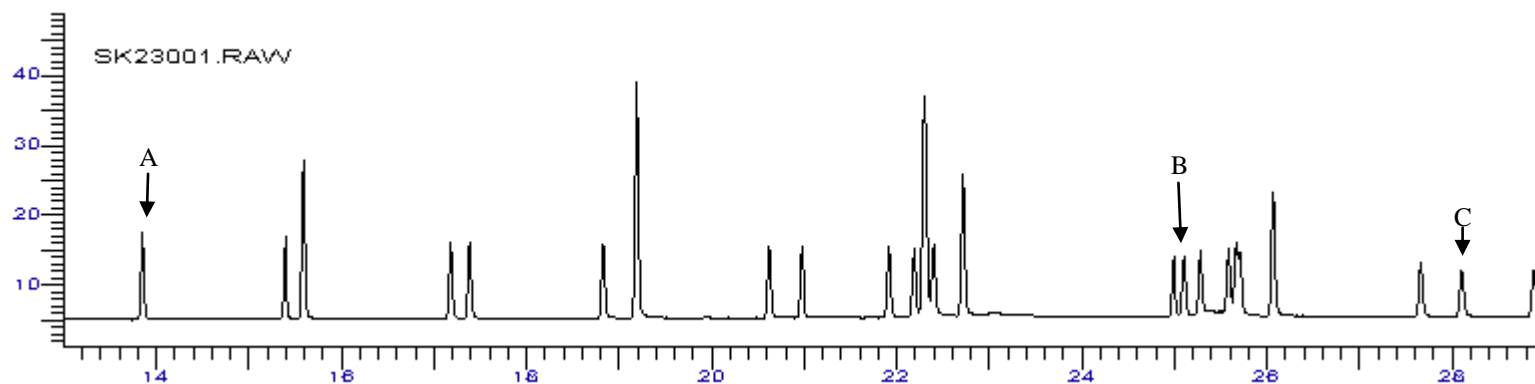
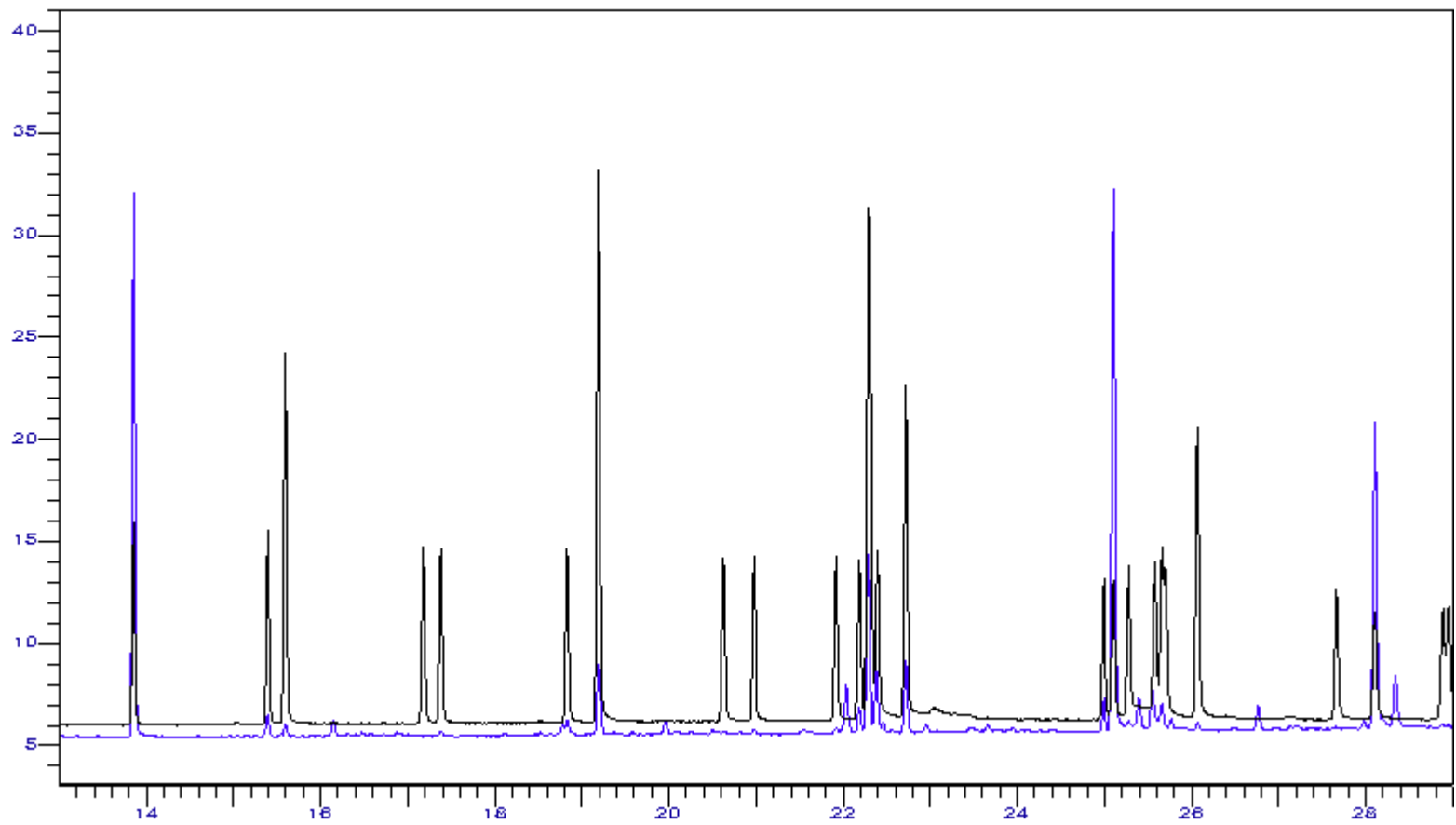
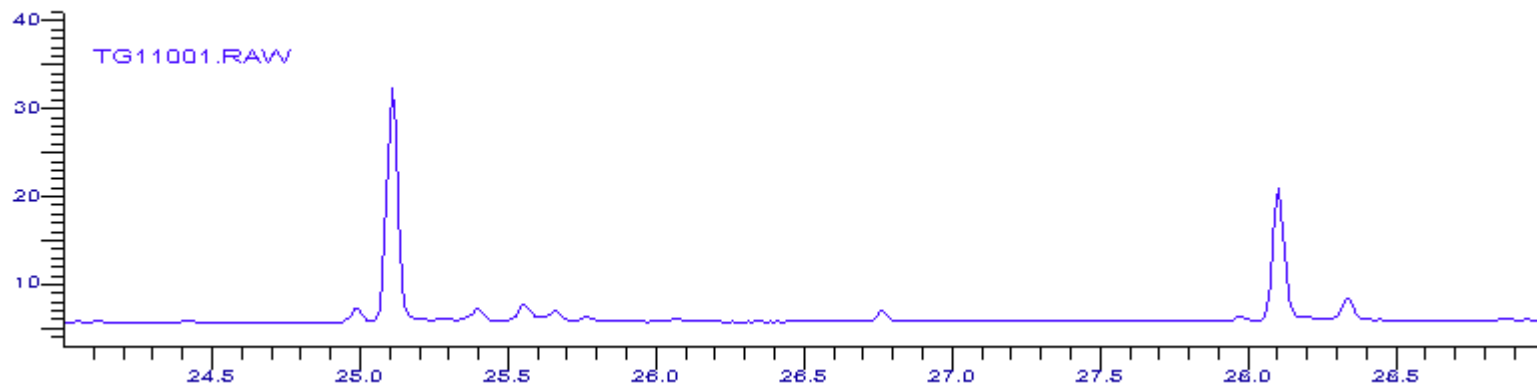
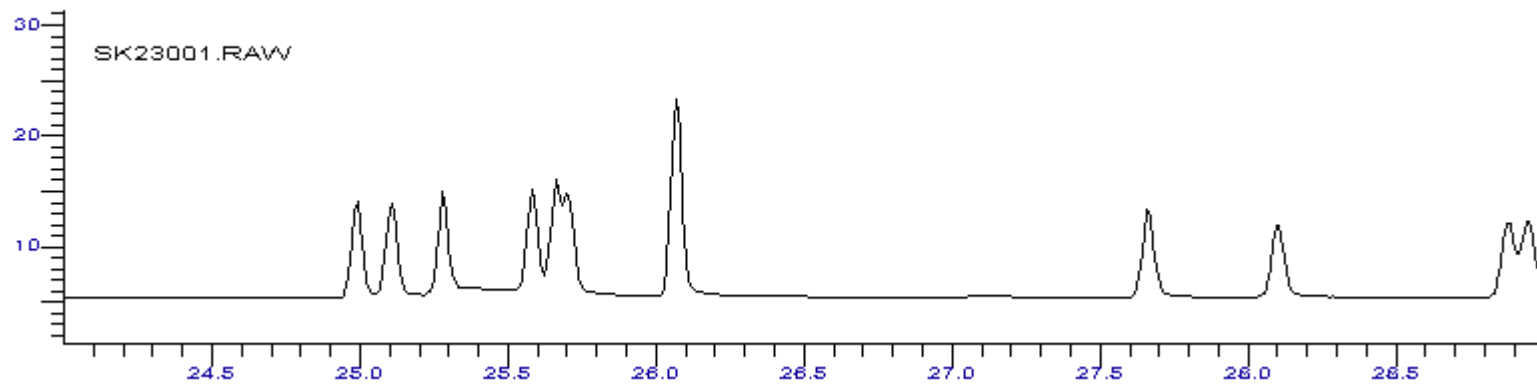


Poniżej, fragment chromatogramu (13-29 minuta) rozdziału mieszaniny standardów (substancji wzorcowych) estrów metylowych kwasów tłuszczowych SK23001.RAW (II grupa, zespół 3) oraz fragment chromatogramu próbki badanego oleju (tran) TG11001.RAW (I grupa, zespół 1). Na drugiej stronie obraz nałożenia poniższych chromatogramów. Na stronie trzeciej i czwartej to samo co wyżej, ale jeszcze mniejszy fragment chromatogramu (24-29 minuta). Na stronie 5 chromatogram standardów estrów kwasów tłuszczowych dostarczony przez producenta. Pik A z wykresu SK23001.RAW odpowiada pikowi nr 7 z wykresu ze strony 6, pik B pikowi nr 29, pik C pikowi nr 34. Co to za kwasy tłuszczowe?







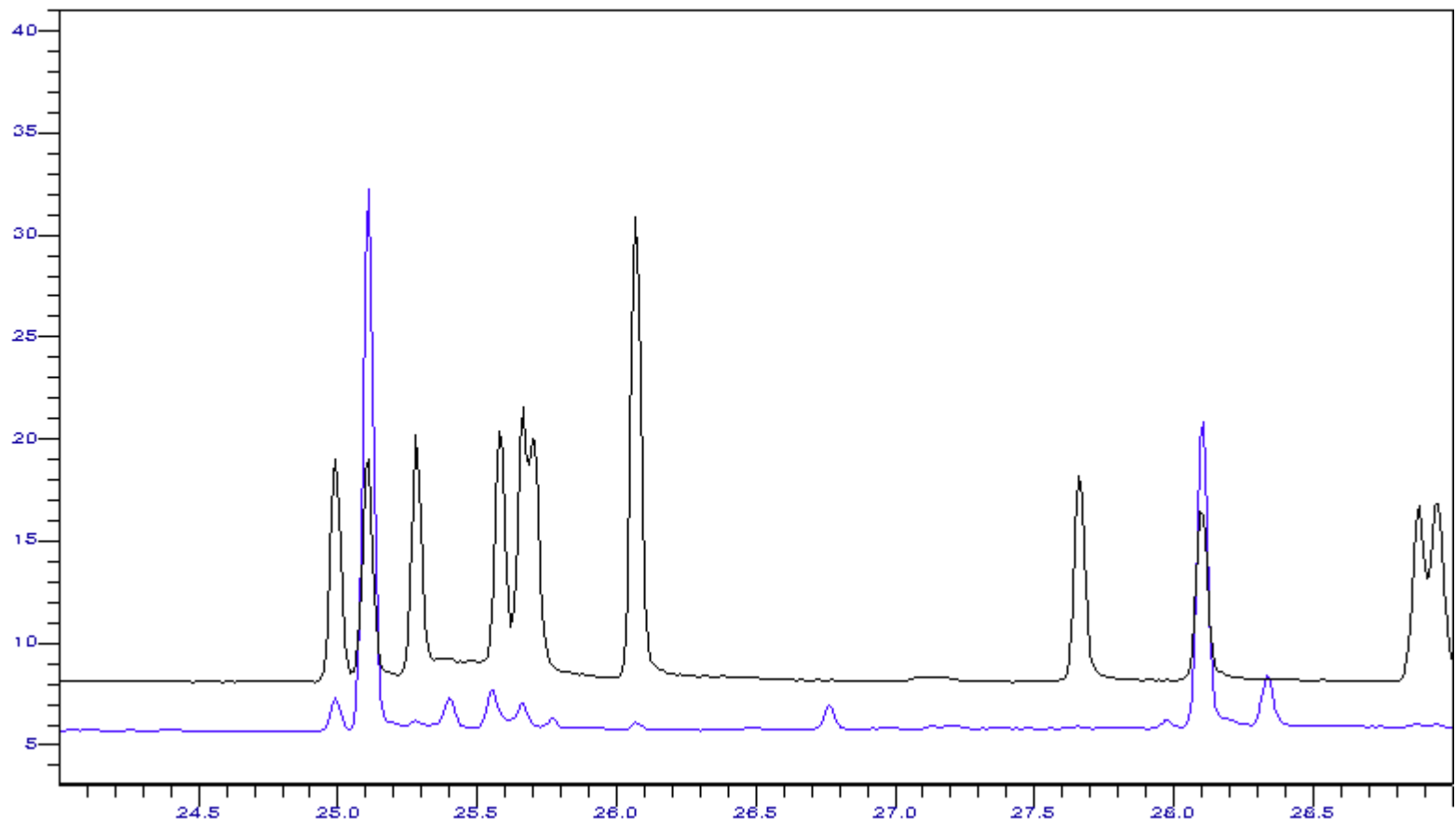


Figure 7. 37-Component FAME Mix on the Equity-1

column: Equity-1, 15 m x 0.10 mm I.D., 0.10 μ m (28039-U)
 oven: 100 °C, 50 °C/min. to 300 °C (1 min.)
 inj.: 250 °C
 det.: FID, 300 °C
 carrier gas: hydrogen, 50 cm/sec constant
 injection: 0.2 μ L, 200:1 split
 liner: 4 mm I.D., split, cup design
 sample: Supelco 37-Component FAME Mix (47885-U), analytes at concentrations indicated in methylene chloride

1. Butyric Acid Methyl Ester (C4:0) at 4 wt %
2. Caproic Acid Methyl Ester (C6:0) at 4 wt %
3. Caprylic Acid Methyl Ester (C8:0) at 4 wt %
4. Capric Acid Methyl Ester (C10:0) at 4 wt %
5. Undecanoic Acid Methyl Ester (C11:0) at 2 wt %
6. Lauric Acid Methyl Ester (C12:0) at 4 wt %
7. Tridecanoic Acid Methyl Ester (C13:0) at 2 wt %
8. Myristic Acid Methyl Ester (C14:0) at 4 wt %
9. Myristoleic Acid Methyl Ester (C14:1) at 2 wt %
10. Pentadecanoic Acid Methyl Ester (C15:0) at 2 wt %
11. cis-10-Pentadecenoic Acid Methyl Ester (C15:1) at 2 wt %
12. Palmitic Acid Methyl Ester (C16:0) at 6 wt %
13. Palmitoleic Acid Methyl Ester (C16:1) at 2 wt %

14. Heptadecanoic Acid Methyl Ester (C17:0) at 2 wt %
15. cis-10-Heptadecenoic Acid Methyl Ester (C17:1) at 2 wt %
16. Stearic Acid Methyl Ester (C18:0) at 4 wt %
17. Oleic Acid Methyl Ester (C18:1n9c) at 4 wt %
18. Elaidic Acid Methyl Ester (C18:1n9t) at 2 wt %
19. Linoleic Acid Methyl Ester (C18:2n6c) at 2 wt %
20. Linolelaidic Acid Methyl Ester (C18:2n6t) at 2 wt %
21. γ -Linolenic Acid Methyl Ester (C18:3n6) at 2 wt %
22. α -Linolenic Acid Methyl Ester (C18:3n3) at 2 wt %
23. Arachidic Acid Methyl Ester (C20:0) at 4 wt %
24. cis-11-Eicosenoic Acid Methyl Ester (C20:1n9) at 2 wt %
25. cis-11,14-Eicosadienoic Acid Methyl Ester (C20:2) at 2 wt %
26. cis-8,11,14-Eicosatrienoic Acid Methyl Ester (C20:3n6) at 2 wt %
27. cis-11,14,17-Eicosatrienoic Acid Methyl Ester (C20:3n3) at 2 wt %
28. Arachidonic Acid Methyl Ester (C20:4n6) at 2 wt %
29. cis-5,8,11,14,17-Eicosapentaenoic Acid Methyl Ester (C20:5n3) at 2 wt %
30. Heneicosanoic Acid Methyl Ester (C21:0) at 2 wt %
31. Behenic Acid Methyl Ester (C22:0) at 4 wt %
32. Erucic Acid Methyl Ester (C22:1n9) at 2 wt %
33. cis-13,16-Docosadienoic Acid Methyl Ester (C22:2) at 2 wt %
34. cis-4,7,10,13,16,19-Docosahexaenoic Acid Methyl Ester (C22:6n3) at 2 wt %
35. Tricosanoic Acid Methyl Ester (C23:0) at 2 wt %
36. Lignoceric Acid Methyl Ester (C24:0) at 4 wt %
37. Nervonic Acid Methyl Ester (C24:1n9) at 2 wt %

